



NICOVO

Elevating the space

Design | Develop | Manufacture | Install

NICOVO PROJECTS PRIVATE LIMITED



OUR MOTTO

**To assist in each step of the way
for you to be able to MAKE IN INDIA**

We aspire to be the single point of contact for all Design, Development, **Manufacturing**, Installation needs of our customers' professional and personal spaces.

We also **take up Turnkey projects and provide the best Resources for all your needs.**

01

WHY NICOVO



WHY NICOVO

EXPERIENCE

Our leadership consists of professionals with more than 60 years of experience in design, development, manufacturing, sourcing and marketing

PERFECTION

Bringing the best of Indian, German, British, French and Chinese technology, customised to suit Indian needs.

INNOVATION

Proven track record of design and architecture of fit-outs for Adidas, Reebok, WH Smith, The Body Shop as well as private kitchens

EXECUTION

Our belief is to plan things well and then surpass expectations when our resources execute turnkey jobs

NETWORK

Building sound strategic alliances to meet your end-to-end needs of design, development, manufacturing, sourcing, and marketing of spaces



RAHUL GOEL

Rahul Goel has 31 years of experience in:

- **Retail Fixture & Furniture Procurement**
- **Innovation, Product Design, Development, Manufacturing and Quality Management**
- **Strategic Sourcing & Supply Chain Management**
- **Setting up a manufacturing plant**

Instrumental in Opening up a Retail Outlet for Vishal Mega Mart every fourth day, constantly for a year.



SUSHIL KUMAR

Sushil Kumar has 31 years of international experience in:

- **Retail Store Rollout & Civil and Interior- Turnkey Projects**
- **Fixture Prototype management, Store Fixtures and furniture sourcing**
- **Store Fit-out installation services in the APAC Region**
- **Supplier Management**
- **Value Engineering**

Expert in Store Fit-out Installations worked with major Brands Like Adidas, Reebok, WH Smith, The Body Shop, and Levi's.

02

OUR SERVICES





ARCHITECTURAL & DESIGN SERVICES

Site analysis, surveys, 3D Photo Mapping,
Drawings, CAD and Rendering



FURNITURE MANUFACTURING SERVICES

Retail fitouts, officer furniture, restaurant/ hotel
furniture, home furniture



INSTALLATION SERVICES

Roll out EBO, Shop-in-shop, Sourcing &
production, Fire Safety, Electrical work (LT & HT)



CONSTRUCTIONAL SERVICES

Budgeting, Procurement, Mechanical, Electrical &
Plumbing, Construction Management



MAINTAINANCE SERVICES

MEP of EBO, Shop-in-shop, warehouse, factories,
offices & buildings



INDUSTRY VERTICLES

KITCHENS

Cabinets

Corners

Elegant
Finishes

Layout

CONSUMER DURABLES

Kitchen
Appliances

Comfort
Appliances

White Goods

RETAIL STORES

Furniture

Gondola's

Walls

Counters

OFFICE FURNITURE

Tables &
chairs

LUXURY FURNITURE

Sofas

Beds

PHOTO GALLERY

FACTORY MACHINERY



Panel Saw



CNC Router



Edge Banding Machine



CNC Acrylic Laser Machine



Wide belt Sander



Spindle Moulder



Veneer Splicing



Hot Press



Sliding Table Saw

FACTORY MACHINERY



Band Saw



Sliding Table Saw



Thicknesser



Planer

CROMPTON - EBO



CROMPTON - EBO

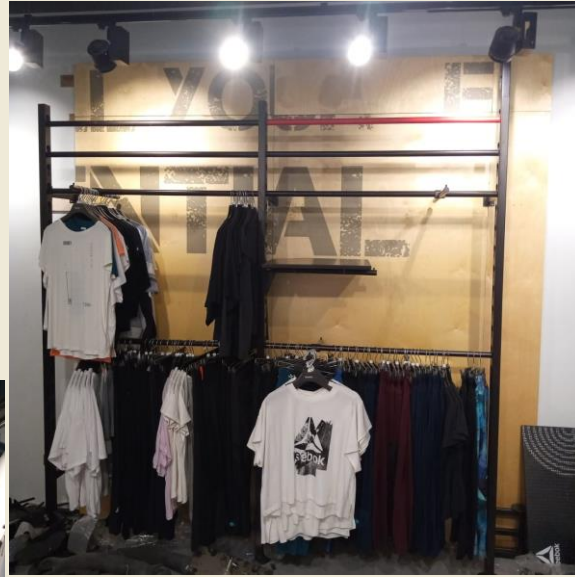


ADIDAS SHOWROOM





REEBOK-FIT HUB







THE BODY SHOP



WHSmith



The Body Shop





ASICS SHOWROOM



FIRST CRY SHOWROOM



MODULAR KITCHEN



MODULAR KITCHEN



MODULAR KITCHEN



MODULAR KITCHEN



MODULAR KITCHEN







Target 2024- 2025 FIRST YEAR REVENUE

INR 10 MILLION





THANKS

**Do you have any
questions?**



info@nicovo.net



+91 9999108265



+91 9999975076



www.nicovo.net